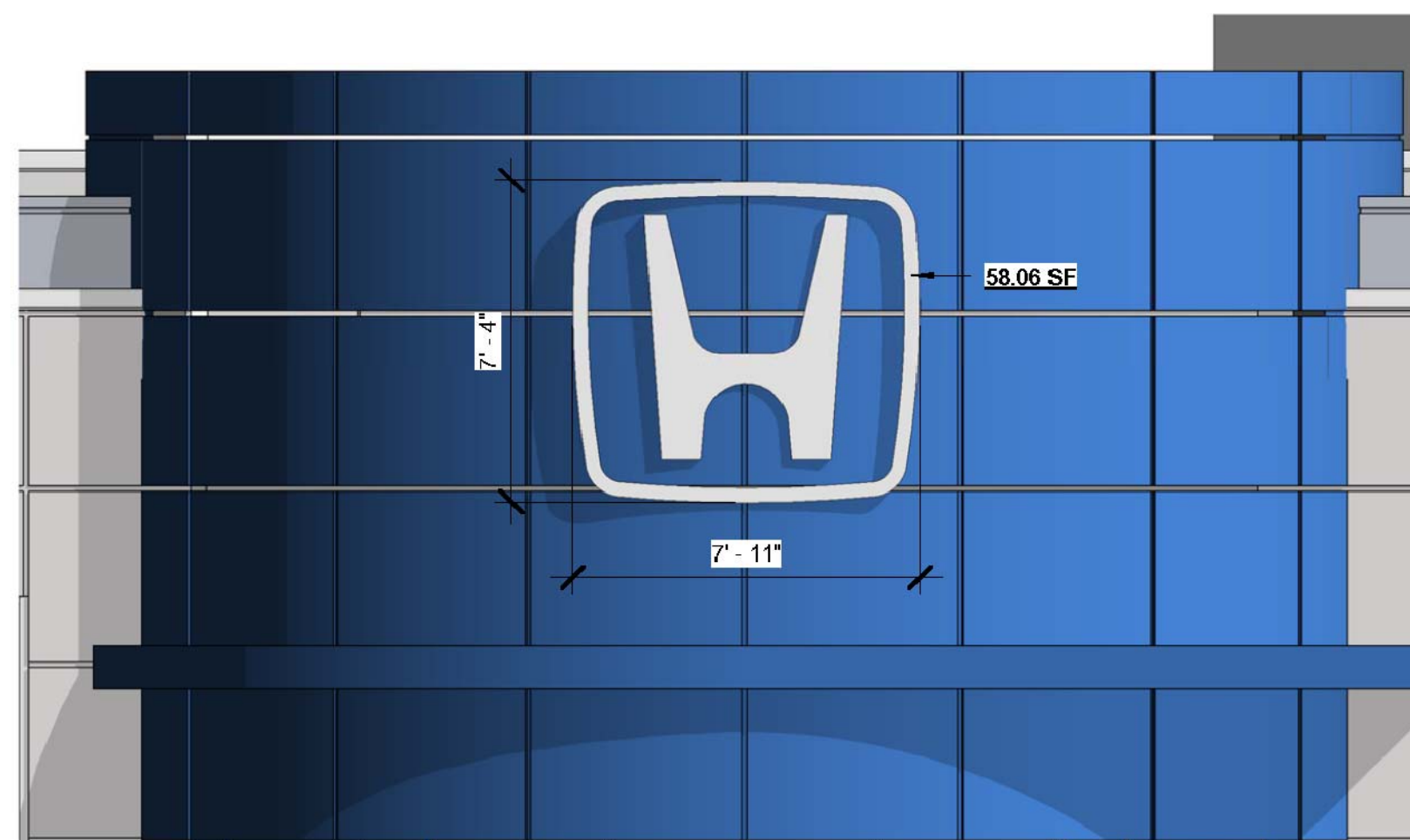
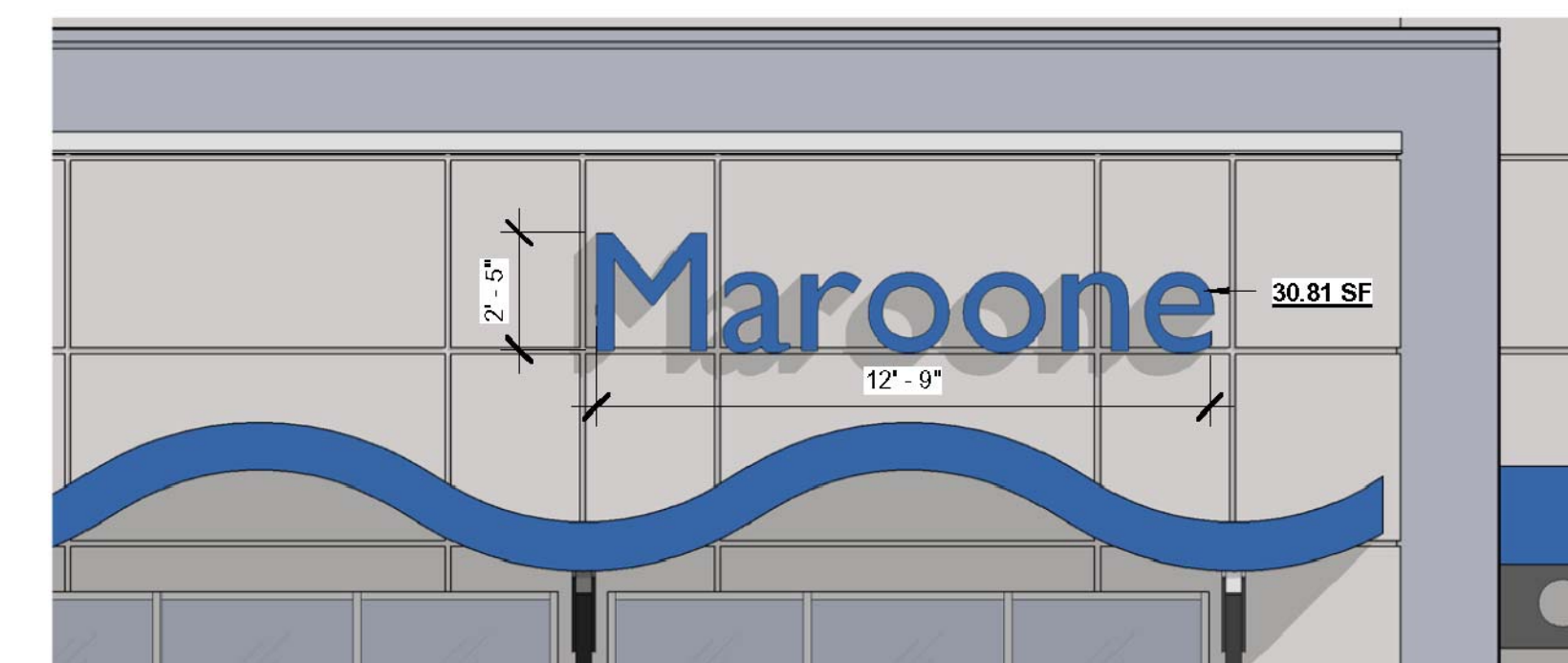


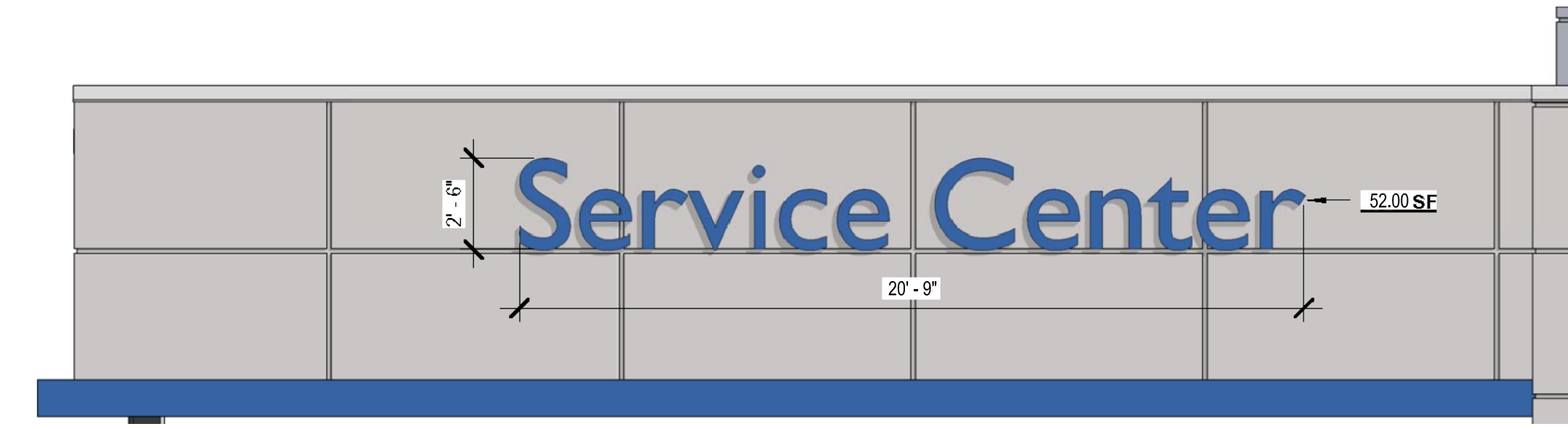
B 56.67 S.F.
INTERNALLY ILLUMINATED SIGN,
PMS 285 C (BLUE)



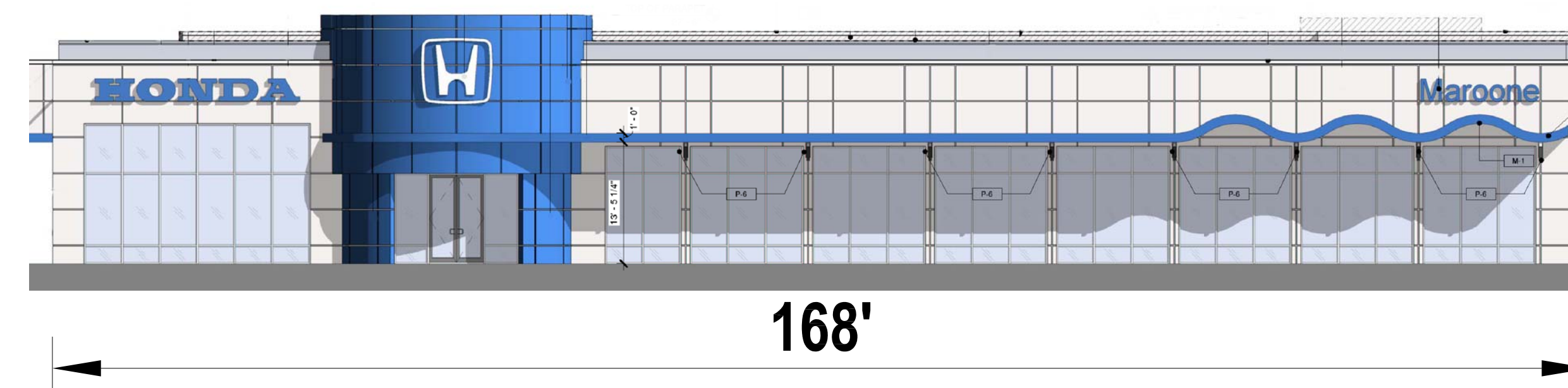
C 58.06 S.F.
DIMENSIONAL BRUSHED
ALUMINUM SIGN
(NOT ILLUMINATED)



D 30.81 S.F.
INTERNALLY ILLUMINATED SIGN,
PMS 285 C (BLUE)



A 52.0 S.F.
DIMENSIONAL SIGN,
PMS 285 C (BLUE)
(NOT ILLUMINATED)



Project: 06-18-2010 08:40:31 5/20/10 09:15:38 by: Jason M. Gunther, P.E. 0-VIDEOS\2009\F2009-000001-HONDA OF HOLLYWOOD IMPORTS SIGN-EXHIBIT-1-KAVDUF-EX-2

BOHLER ENGINEERING

CORPORATE OFFICE:
WARREN, NJ

OFFICES:

- SOUTHBRIDGE MA
- BOWNE MD
- WILMINGTON NC
- PURCHASE NY
- STURLING VA
- CHARLOTTE NC
- FORT LAUDERDALE FL
- CHERRY HILL NJ
- CHICAGO IL
- CONCORD MA
- PORTLAND ME

CIVIL & CONSULTING ENGINEERS
SURVEYORS
PROJECT MANAGERS
ENVIRONMENTAL CONSULTANTS
LANDSCAPE ARCHITECTS

REGISTERED PROFESSIONAL ENGINEER
STATE OF FLORIDA
LICENSE NO. 58629
EXPIRES 12/31/2010

REVISIONS:

REV.	DATE	COMMENT	BY

PERMIT SET

PROJECT No.:	F080021
DRAWN BY:	CAD
CHECKED BY:	JMG
DATE:	07/31/2009
SCALE:	AS NOTED
CAD I.D.:	SIGN-EXHIBIT

PROPOSED BUILDING ADDITION

FOR
MAROONE HONDA OF HOLLYWOOD

HOLLYWOOD IMPORTS, LTD. INC.

1450 N. STATE ROAD 7
CITY OF HOLLYWOOD
BROWARD COUNTY
FLORIDA

BOHLER ENGINEERING

RADICE III
1000 CORPORATE DRIVE, SUITE 250
FORT LAUDERDALE, FL 33334
PH: (954) 202-7000
FX: (954) 202-7070
www.BohlerEngineering.com

JASON M. GUNTHER

PROFESSIONAL ENGINEER
February 5, 2010
FLORIDA LICENSE No. 58629
FLORIDA BUSINESS CERT. OF AUTH. No. 27528

SHEET TITLE:
SIGN EXHIBIT

SHEET NUMBER:
EX-2

REVISION 0